

Saving a cutout photo with no background for YearTech Online

There is one question we have heard more this fall than any other, "How do I do a cutout background for YearTech Online?" So here is the scoop.

You have a photo that you have used whatever Photoshop technique you like to remove the background, and the object of the photo is cut out. Like this young lady here. (Figure A)

If you just try to upload the photo as it is (saved as a JPEG) and place it on a YearTech Online page, the photo will look just fine until you try and put it on a colored background or to move some type near it. Then you will find that your white background is still there.

You want the photo to look more like the one below. (Figure E)

To get from Figure A to Figure E (the way you want it) is really simple. Just follow these steps:

1. Open the photo you want to use and select the background using whatever selection method you like. (See the previous page)
2. Once you have selected the background, you need to make the background layer editable so you can actually remove the background. To do this, double-click the Background Layer in the Layers palette.
3. This will bring up a dialog box that asks you to rename the layer and offers Layer 0 as the option. That will work fine so click OK. (Figure B) Once you have done this, hit Delete to clear the background from the photo.
4. Then choose File>Save As... and choose TIFF as the file format (not JPEG). (Figure C)
5. After you click OK to save the file, a dialog box will pop up. Make sure to click TIFF with Transparency. Then click OK. (Figure D)
6. You may get another dialog/warning box telling you that some programs can't use TIFFs with transparency. Don't worry about this: YearTech Online can use it so just click OK and that box will close.
7. After you have saved the photo, you can now upload it to your YearTech Online website for use in your yearbook. The photo should look just like Figure E whenever you use it with type or backgrounds behind it.



Figure B

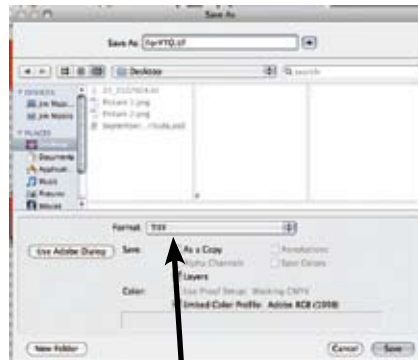
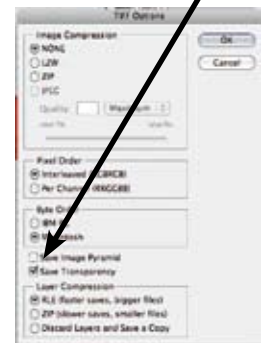


Figure C

Figure D
Make sure to check right here.



Saved as a TIFF with Transparency
Figure E